



The University of Chicago Medicine's ECHO-Chicago program is the longest running ECHO program in Illinois. It transfers knowledge to areas of the state, urban and rural, lacking access to specialty care.



5841 South Maryland
Chicago, IL 60637

WHAT IS ECHO-CHICAGO?



BUILDING
CAPACITY OF LOCAL
SYSTEMS CARE



10-18 WEEKLY HOUR-
LONG VIDEO SESSIONS
WITH SUBJECT MATTER
EXPERT FACILITATORS

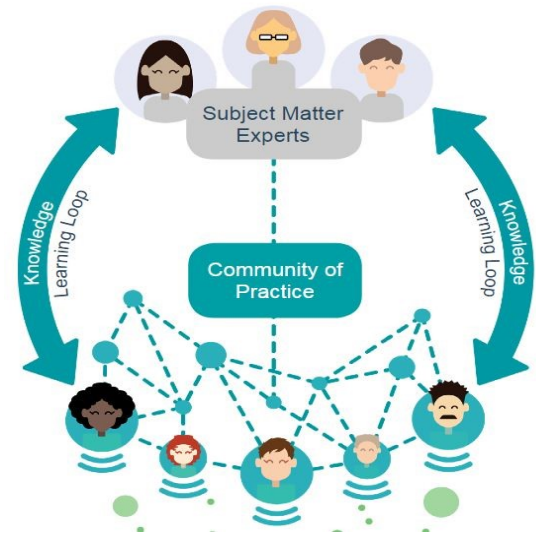


SPECIALTY CARE
KNOWLEDGE TO
PRIMARY CARE
PROVIDERS



CASE-BASED
LEARNING WITH
PEER DISCUSSION

HOW DOES IT WORK?



BEFORE

- ◆ Register for series of your choosing
- ◆ Receive email confirmation from ECHO Project Coordinator

DURING

- ◆ Join live sessions weekly via Zoom while learning best practices from subject matter experts
- ◆ Present 1-2 de-identified patient cases from your practice
- ◆ Access session recordings & resources on ECHO-Chicago site

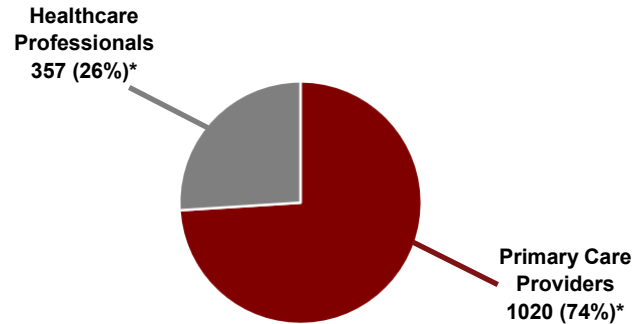
AFTER

- ◆ Claim CME/CEU/MOC Pt.2/MOC Pt.4 credit (as applicable) within 90 days
- ◆ Obtain certificate of completion
- ◆ Complete follow-up case form

Series Topics Include:

- PEDIATRIC SERIES**
- ◆ Adolescent Health
 - ◆ Childhood Adversity & Trauma
 - ◆ Childhood Obesity & Comorbidities
 - ◆ Complex Pediatric Asthma
 - ◆ Pediatric Attention Deficit Hyperactivity Disorder

- ADULT SERIES**
- ◆ Behavioral Health Integration: Systems Collaborative Care
 - ◆ Complex Diabetes (on hold)
 - ◆ Geriatrics for Primary Care
 - ◆ Geriatrics for Skilled Nursing Facilities
 - ◆ Hepatitis C
 - ◆ Opioid Use Disorder
 - ◆ Resistant Hypertension
 - ◆ Serious Mental Illness
 - ◆ Women's Health: A Multidisciplinary Approach to Complex Care



Primary Care Providers (PCPs) & Healthcare Professionals Trained to Date

*Updated March 2021

Participant Testimonial

"The ECHO-Chicago HCV program has allowed me to confidently incorporate treatment of chronic Hepatitis C infection into my primary care practice. The series was an engaging and comprehensive experience, but even more valuable has been the ECHO program's ongoing support and assistance, which allowed me to quickly and reliably seek counsel when needed and thus safely rid patients of a disease that causes them great stress and worry." — Dina Zissimopoulos, APN, PCC Wellness

REGISTER NOW

SCAN THIS QR CODE:



VISIT OUR WEBSITE:
Click "REGISTER" on the Homepage

EMAIL US:
echo@bsd.uchicago.edu

CALL US:
Isa Rodriguez,
Associate Director of Outreach
773-834-0232

Follow us:



[@echo-chicago](https://twitter.com/echo-chicago)

ECHO-Chicago aims to establish and cultivate a robust knowledge network that builds community-based primary care capacity to reduce the serious health disparities affecting children and adults in underserved communities.